

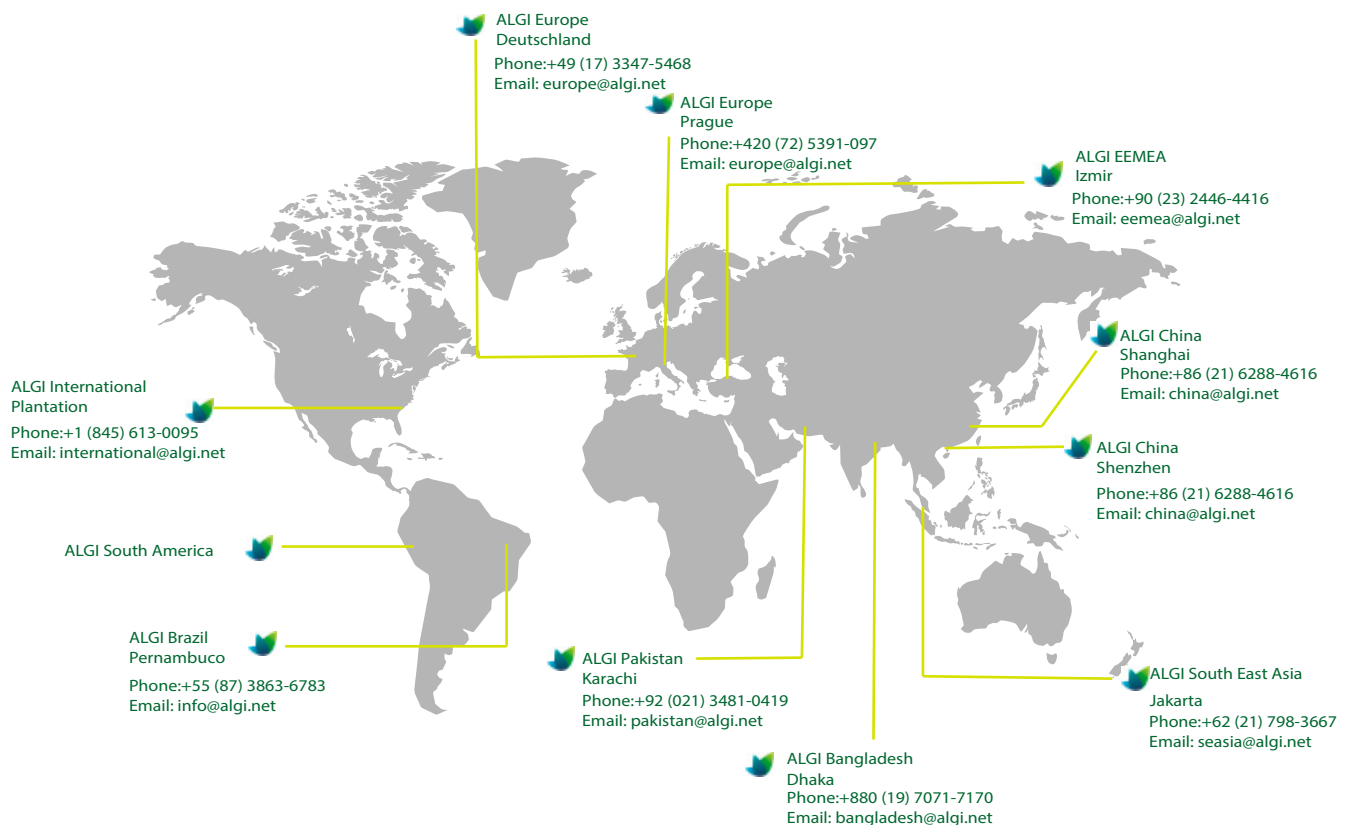


Building a **SUSTAINABLE ETHICAL CULTURE TOGETHER**

25+ YEARS OF EXPERIENCE

“ALGI has dedicated more than two decades to Corporate Social Responsibility. The cornerstones of our foundation are Quality, Integrity, Trust, and Accountability. These values are inextricably woven into our core strategy. We are committed to providing the highest quality in third party auditing services, while ensuring transparency, as well as creating a positive impact on a global scale.”
Message from the CEO

Strategically located offices enable us to provide rapid response with culturally sensitive and professionally diversified staff





The WRAP Principles are based on generally accepted international workplace standards, local laws and workplace regulations, and include the spirit or language of relevant conventions of the International Labor Organization (ILO). The Principles encompass human resources management, health and safety, environmental practices, and legal compliance including import/export and customs compliance and security standards.

AUDIT METHODOLOGY

Attaining a WRAP certification involves a 5-step process. It begins with the production facility filing an initial application with WRAP and paying the registration fee. Then the facility will conduct a self-assessment of its compliance with WRAP's 12 Principles, which is followed by an additional audit conducted by one of the accredited monitoring partners. The audit report is sent to WRAP, where it is decided whether or not a certification is granted.

AUDIT TIME

Silver Certificate (valid for 6 months)
Gold Certificate (valid for 1 year)

Platinum, Certificate (valid for 2 years)



SA8000 is an auditable certification standard based on international workplace norms of The International Labor Organization (ILO) conventions, the Universal Declaration of Human Rights, the UN Convention on the Rights of the Child and the local labor law. Those seeking to comply with SA8000 have adopted policies and procedures that protect the basic human rights of workers.

AUDIT METHODOLOGY

SA8000 Certification is a process of management system verification and the continuous implementation of best practices to ensure compliance with the SA8000 Standard. Certification audits may only be conducted by accredited certification bodies.

AUDIT TIME

The SA8000 Certification has a valid cycle of 3 years. The cycle begins with a 2 part certification audit and the facility will be visited yearly during this cycle. Additionally, there will be desktop verification activities conducted by the certification body to ensure continuance of good standing.



Sedex is an alliance of companies, trade unions and voluntary organizations which promote the implementation of sustainable corporate practices within supply chains. The intention is to ensure that the working conditions for all workers meet or exceed international labor standards.

It is composed of two key elements: the ETI Base Code and the accompanying Principles of Implementation. ETI has developed a code of labor practice reflecting the most relevant international standards with respect to labor practices and the local labor laws.

AUDIT METHODOLOGY

Sedex is an online platform where buyers and suppliers may share socially responsible practices. The SMETA Report format, developed to provide consistency in supply chain auditing, is based on the Ethical Trade Initiative Code of Conduct, reflecting the most relevant international standards with respect to labor practices and the local labor laws.

AUDIT TIME

Initial audit followed by follow up audit on yearly bases



Amfori, leading global business association for open and sustainable trade, strives to ensure that all trade delivers social, environmental and economic benefits for everyone.

AUDIT METHODOLOGY

Only qualified and authorized auditors shall conduct amfori BSCI audits. All amfori BSCI audits shall be requested and administrated via the BSCI Platform. amfori BSCI audits can be conducted only at facilities that are registered on the BSCI platform and who are linked to an RSP holder.

AUDIT TIME

Audit cycle is two years with a follow-up audit prior to the completion of 12 month from the full audit date



ALGI provides specialized social compliance services following private Code's of conduct and local labor legislation.

WHAT MAKE US DIFFERENT?



94*
EXPERTS
GLOBALLY

AUDITING
IN 61*
COUNTRIES

Data of 2018*

75%* OF
THE
STAFF IS
SA8000,
WRAP, ISO
AND/OR
IRCA
CERTIFIED

Evaluating and reporting to communicate concisely and objectively on facilities' true level of social compliance.

Understanding and knowledge of local issues linked to Social Compliance and Quality Assurance Standards.

Highly experienced auditors that undergo continuous training and learning.

Cooperative and respectful attitude towards factory management and employees during interviews.

Quality assurance and compliance staff working independently from the on-site audit process.

Global Management System based in ISO 17021:2015, ISO 9001:2015.

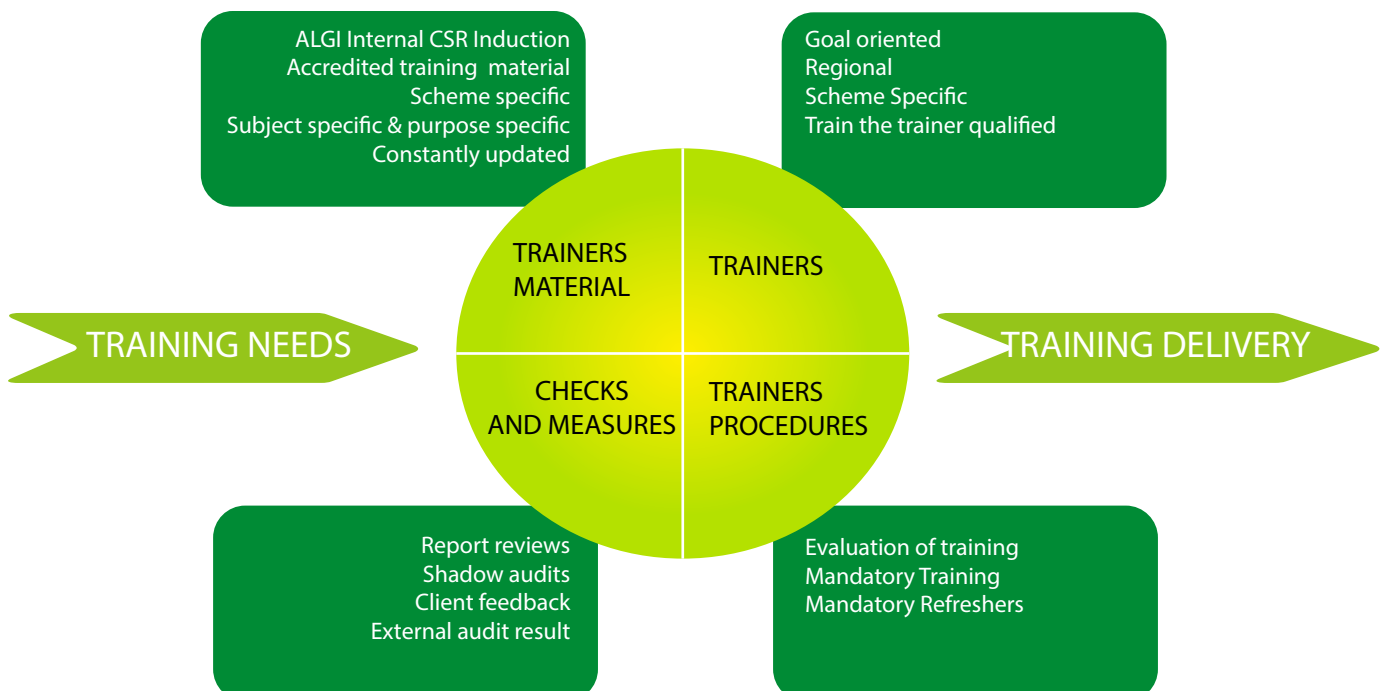
Real time operations followed up via our ALGI Management System Software.

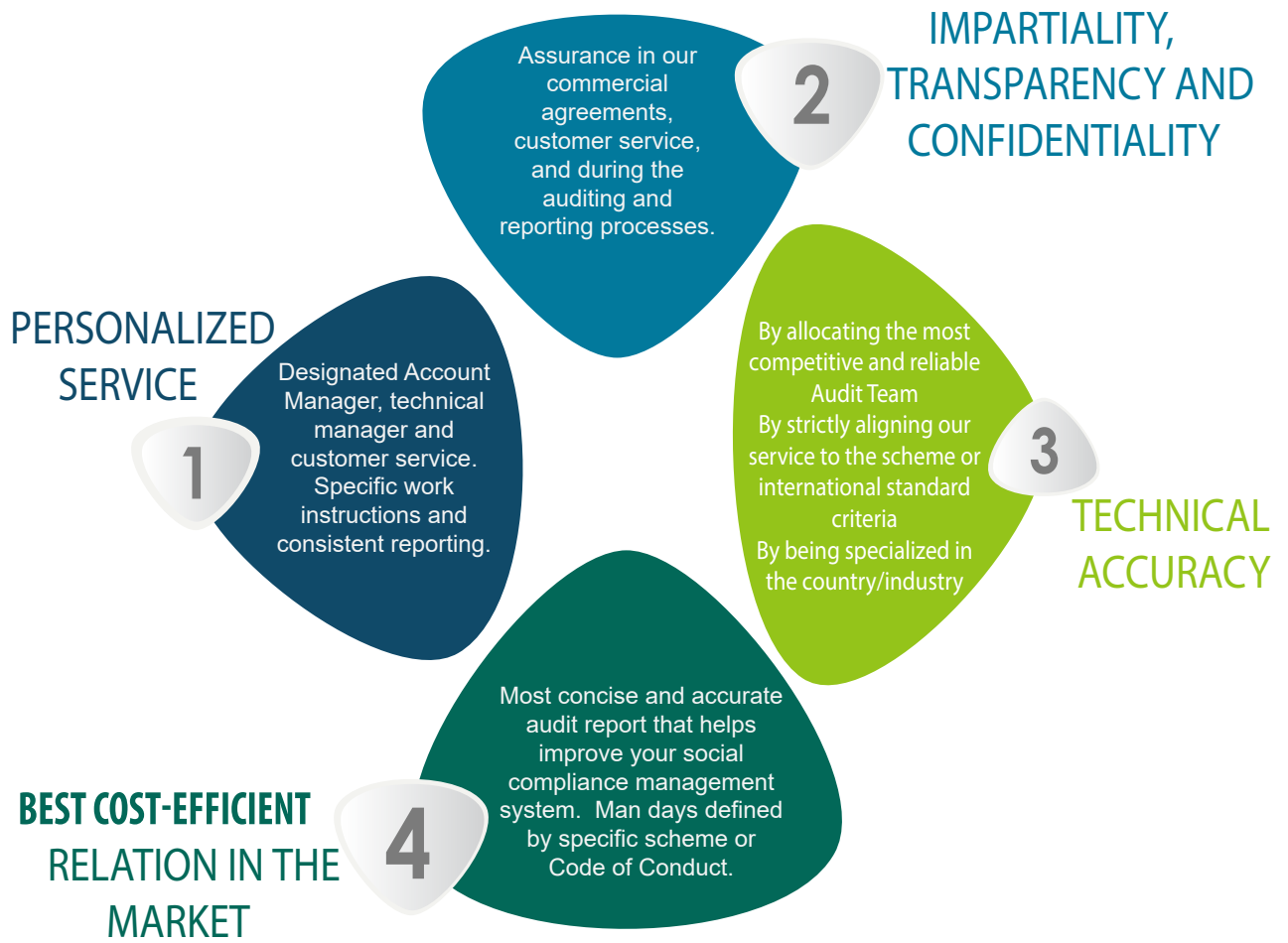
TRANSPARENCY, INTEGRITY, QUALITY
and TRUSTWORTHINESS are our leading values;
PASSION and RESPONSIBILITY our lifestyle

OUR QUALITY and PRESTIGE
are based on our most valuable resource: our
experienced and professional auditors

ALGI AUDITOR COMPETENCE

ALGI is dedicated to providing its customers with the most accurate information on the social compliance of its supply chain. As our most valued asset, our highly experienced auditors undergo continuous training on the latest developments in CSR practices and standards to keep them up to date on legal and industry specific information.





HEADQUARTER OFFICE :
ALGI INTERNATIONAL INC

8201 PETERS ROAD, SUITE 1000
PLANTATION, FL 33324 USA

+1 (845) 613 - 0095

info@algi.net